

MOTULTECH RUBRIC HM

EVERY MACHINE HAS BEEN CONSTITUTED FROM MECHANICAL PARTS, THEREFORE THE RIGHT CHOICE OF LUBRICANT FOR THEM IS VERY IMPORTANT TO ENSURE THE MACHINE IS FULLY PROTECTED, OPERATING PRECISELY AND EFFECTIVELY.

The MOTULTECH HYDRAULIC oil range RUBRIC has been developed from highly refined base oil and innovative additive systems help equipment operator select the right lubricant to ensure the optimum operation through:

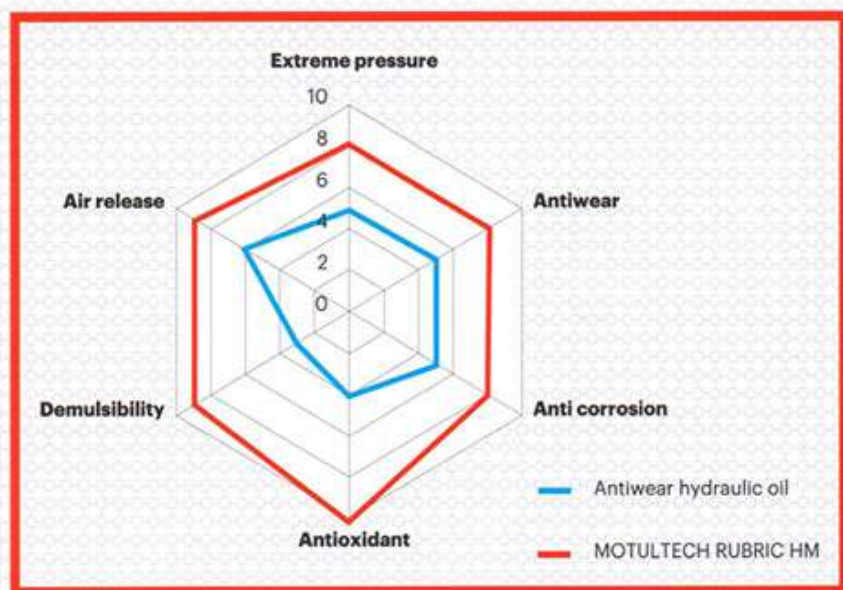
- **EQUIPMENT PROTECTION**
- **LONGER OIL LIFE**
- **OPTIMUM PERFORMANCE**



| PRODUCT | EQUIPMENT PROTECTION | LONGER OIL LIFE | OPTIMUM PERFORMANCE |
|-----------|----------------------|-----------------|---------------------|
| RUBRIC HV | ★★★★★ | ★★★★★ | ★★★★★ |
| RUBRIC HM | ★★★★ | ★★★★★ | ★★★★ |
| RUBRIC HH | ★★ | ★★★ | ★★ |

MOTULTECH RUBRIC HM provides equipment protection and optimum performance for general hydraulic systems in plant, as well as other mobile hydraulic systems.

The product is designed from highly refined base oils and innovative additive systems to provide resistance of oxidation and deposit formation, and maintain system and equipment cleanliness. This product meets the most important standards of leading global equipment manufacturers



MOTUL **TECH**

29th floor, Pearl Plaza, 561 A Dien Bien Phu street, Binh Thanh District, HCMC

Tel: (84-8) 3513 6015 - Fax: (84-8) 3513 6027

www.motul.com

MOTULTECH RUBRIC HM

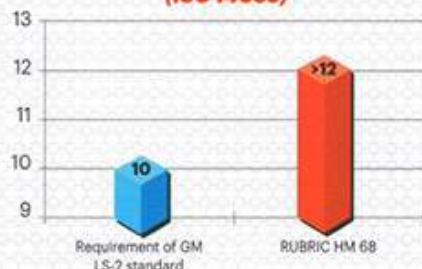
EQUIPMENT PROTECTION

Protecting equipment from damage help to increase performance and longer service life, maximize the efficiency for users. MOTULTECH RUBRIC HM helps to protect equipment through:

FZG load test

Failed stage is higher more than 2 units compare to OEM standard.

FZG, (failed stage) (ISO 14635)

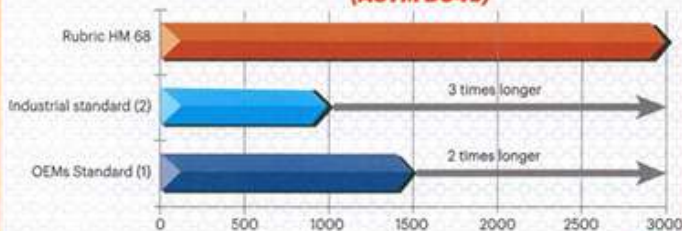


LONGER OIL LIFE

MOTULTECH RUBRIC HM has developed base on highly refined base oils and specific additive system, help increase oil life. Therefore, the downtime of equipment is decreased, and performance of overall system is increased and minimize the maintenance cost.

MOTULTECH RUBRIC HM has reached the oil life over 2 to 3 times longer than industrial and OEMs standards.

Oil life -TOST, (hours) (ASTM D943)



HIGHER IS BETTER

(1) GM LS-2- LH (2) ASTM D6158 (HM); ISO 11158 (HM); DIN 51524 - part 2

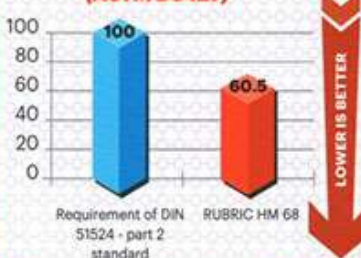
OPTIMUM PERFORMANCE

To ensure hydraulic system operating at maximum capacity, hydraulic oil has to fulfill these primary functions: protection, lubricating and transfer the energy effectively. MOTULTECH RUBRIC HM helps to maintain and improve system efficiency through:

Excellent air release properties:

40% faster than the requirement of industrial standard. Therefore, to help enhance the efficiency of energy transfer.

Air release property is better than DIN 51524-p2 standard, (%) (ASTM D3427)

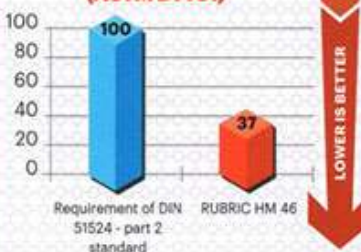


LOWER IS BETTER

Very good demulsibility properties:

63% faster than industrial standard. Therefore, to help enhance lubricating and protection properties.

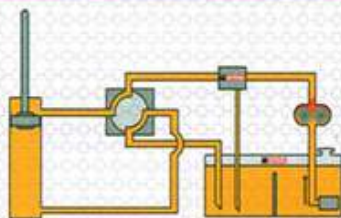
Demulsibility property is better than DIN 51524-p2 standard, (%) (ASTM D1401)



LOWER IS BETTER

APPLICATION

- Used for industrial hydraulic system.
- Used for hydraulic system equipped with vane, gear and piston pumps.
- Used for circulating system, construction hydraulic system and other industrial hydraulic system with heavy load.



MOTULTECH RUBRIC HV

EVERY MACHINE HAS BEEN CONSTITUTED FROM MECHANICAL PARTS, THEREFORE THE RIGHT CHOICE OF LUBRICANT FOR THEM IS VERY IMPORTANT TO ENSURE THE MACHINE IS FULLY PROTECTED, OPERATING PRECISELY AND EFFECTIVELY.

The MOTULTECH HYDRAULIC oil range RUBRIC has been developed from highly refined base oil and innovative additive systems help equipment operator select the right lubricant to ensure the optimum operation through:

- **EQUIPMENT PROTECTION**
- **LONGER OIL LIFE**
- **OPTIMUM PERFORMANCE**



| PRODUCT | EQUIPMENT PROTECTION | LONGER OIL LIFE | OPTIMUM PERFORMANCE |
|-----------|----------------------|-----------------|---------------------|
| RUBRIC HV | ★★★★★ | ★★★★★ | ★★★★★ |
| RUBRIC HM | ★★★★ | ★★★★★ | ★★★★ |
| RUBRIC HH | ★★ | ★★★ | ★★ |

MOTULTECH RUBRIC HV provides equipment protection and optimum performance for hydraulic system operating in wide range of temperature.

The product is designed from highly refined base oils and innovative additive system to provide resistance of the viscosity changing as temperature changes, maintain the protection and lubricating for hydraulic system. In addition, product has ability to resistance oxidation and deposit formation, and maintain system and equipment cleanliness. This product meets the most important standards of leading global equipment manufacturers.

